



THE CONSORTIUM
ACADEMY TRUST

Wolfreton
SCHOOL AND SIXTH FORM COLLEGE

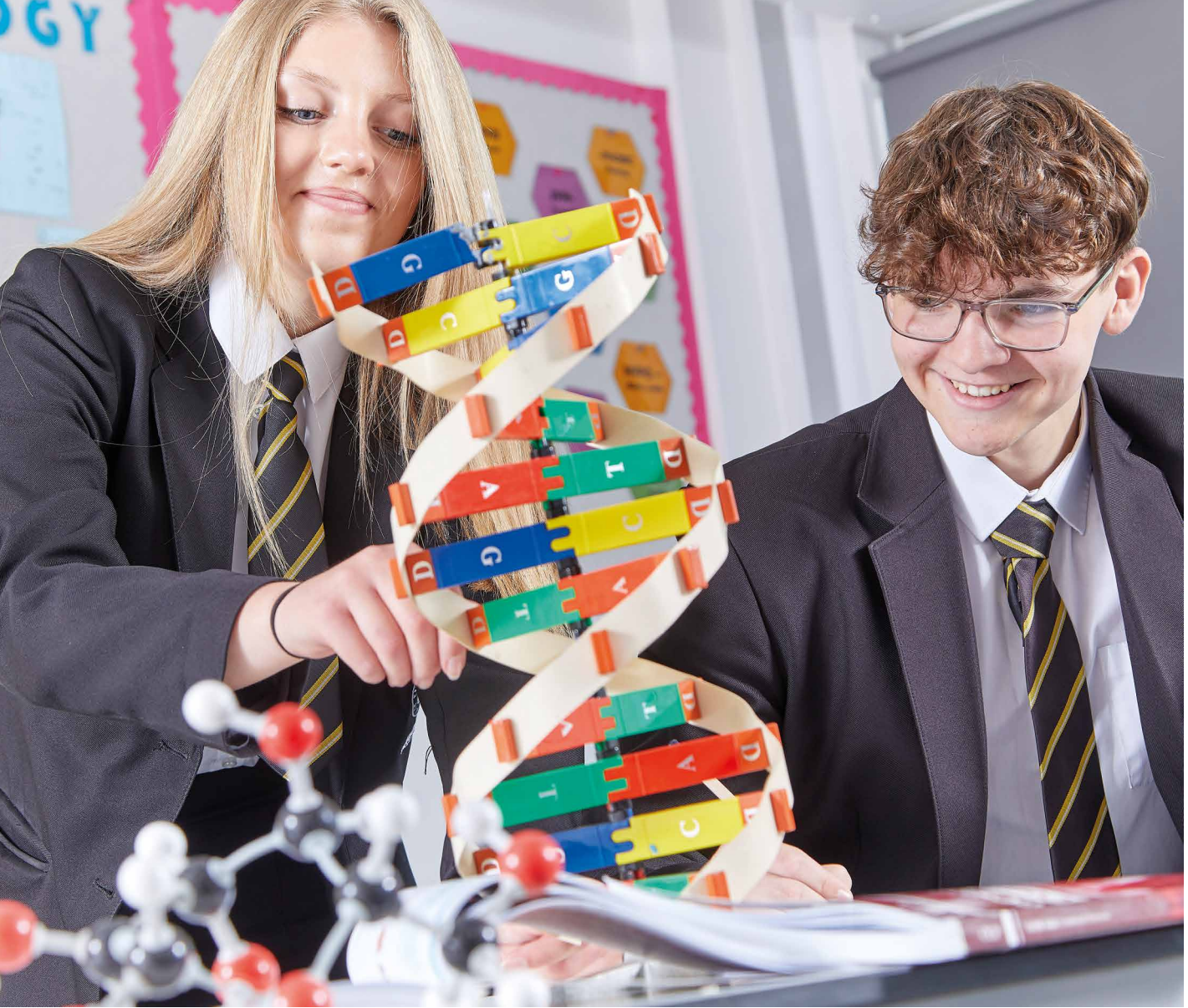


Parent Guide

Transition
2025/26



**SHAPING
POSITIVE
FUTURES**



Contents

04	Welcome to Wolfreton	17	Attendance
06	Our Mission	18	Pastoral Care
07	Our Values	19	Student Leadership
08	Key People	20	Our Uniform
10	Transition and Induction	21	Our PE Kit
11	Communication	22	Enrichment Clubs, Trips and Visits
12	Curriculum	23	Personal Development
13	Assessment and Homework	24	Arbor Pay Parent Portal
14	The Wolfreton Way	25	Catering
15	Rewards and Consequences	26	Positive Destinations
16	Daily Routines	27	Term Dates 2025-26



Shaping Positive Futures



Welcome to our new Wolfreton learners.

Wolfreton School and Sixth Form College is part of The Consortium Academy Trust. At The Consortium Academy Trust, we are ambitious about the future - creating learning environments and excellence in teaching and learning that provide our children and young people with the best chance at a successful future.

Our vision is Shaping Positive Futures as we strongly believe our sole purpose is supporting children and young people to achieve their ambitions. This vision gives us a shared sense of purpose and direction and is something we are all proud to be a part of.

Across our community of nine schools our people are doing remarkable things by being fully engaged in work that transforms lives, supporting children and young people to grow in confidence and develop into citizens we are proud of.

We are ambitious to shape positive futures so each young person can excel and achieve their goals in education and beyond and we welcome you as you begin to explore and develop your interests and passions at the start of your education journey with us.

Lizann Lawson,
CEO



As a Trust we share resources and expertise, to ensure our young people experience inclusive learning opportunities alongside a challenging, fun and aspirant education."





Welcome to Wolfreton



Dear Parents and Carers

Welcome to Wolfreton. I am delighted that you have chosen to trust Wolfreton with the next phase of your child's education.

On behalf of the members of our community, I would like to welcome your child warmly to their new school; we look forward to working with you over the coming years.

We are a truly ambitious school, inspired by our vision of **Igniting Fires, Expanding Horizons, Achieving**

Ambitions. Whether through our academic curriculum or our personal development curriculum, we strive to ignite new interests in our learners and develop existing interests further, thus expanding horizons as they journey through school. Ultimately, we aim to work alongside you to ensure that your child has the very best chance of success.

The success of our school undoubtedly comes from our people – our staff, our learners and our families. As a large school, we are fortunate to attract subject specialists – talented colleagues who teach across the curriculum. The passion they have for their subjects is key in inspiring our learners to learn. We also invest in a



Excellence, Endeavour, Respect



Please take time to read through our Parent Guide. It shares key information on our people, our processes and the opportunities your child will benefit from."



large 'wider pastoral team'. Your child's Head of Year and Pastoral Manager, alongside their Tutor will be your key contacts; they can also connect you with other pastoral colleagues where further support can be provided.

Our learners are positive and engaging. They understand our high expectations and why we have these; they engage positively with our staff, sharing their views both formally through our student voice opportunities, and informally during social times. Finally, our partnership with you is of upmost importance to us. As adults, we all want the same for your children; for them to feel happy and feel safe, for them to learn and make friends, and ultimately, to become the person they wish to be.

Please take time to read through our Parent Guide. It shares key information on our people, our processes and the opportunities your child will benefit from.

Further information can be found on the website and our fortnightly newsletter provides a regular insight into what we have been doing.

I look forward to working with your child and you, their family, as they contribute to the next phase of Wolfreton's history.

Susanne Kukuc,
Headteacher



Our Mission

**We aim to enable everyone to fulfil their potential,
providing the foundations for them to excel in all that they do
and to move on prepared to achieve their ambitions.**

Our Values

Excellence

we aim to inspire – to be the best that we can be

Endeavour

we promote the qualities of determination and courage

Respect

we are firm advocates of friendship and equality



Our values lie behind the work that we do in school.

We refer to **The Wolfreton Way – Excellence, Endeavour, Respect**. Our learners will learn what these mean through our tutor programme and assemblies; they will also see them reflected in our rewards system with learners collecting House Points awarded for displaying these values.

Excellence, Endeavour, Respect
THE WOLFRETON WAY

Key People

Leadership Team



Miss Kukuc

Headteacher



Miss Hull

Deputy Headteacher
Pastoral



Mr Owen

Deputy Headteacher
Quality of Education



Mrs Perry

Assistant Headteacher
Key Stage 3



Mr Carruthers (DSL)

Assistant Headteacher
Key Stage 4 and DSL



Miss Cutts

Assistant Headteacher
Teaching and Learning



Mrs Warnett

Assistant Headteacher
Standards



Mrs Taylor

Assistant Headteacher
Head of Sixth Form

Wider Pastoral Team



Ms Norton

Director of Inclusion -
SENDCO



Mrs Morton

Deputy Director of
Inclusion – SENDCO



Mrs Cook

Safeguarding
Manager



Mrs Anderson

Attendance and Welfare
Manager

Heads of Year and Pastoral Managers



Mrs Bates

Head of Year 7
Transition Link



Mrs Reed

Year 7
Pastoral Manager

If you have any queries regarding your son/daughter's transition process into Year 7 please do not hesitate to contact us via email: enquiries@wolfreton.co.uk



Mr Slater

Head of Year



Mr Hewick

Head of Year



Mr Walsh

Head of Year



Mr Hemsley

Head of Year



Mrs Corlass

Pastoral
Manager



Mrs Haywood

Pastoral
Manager



Miss Cater

Pastoral
Manager



Mrs Painter

Pastoral
Manager



Transition and Induction

Transition is an important time, so we work closely with primary school staff to ensure a smooth move to Wolfreton from your child's primary school.

Since your child secured their place with us, we have been gathering information on how they have progressed during their time at their primary school so we can thoroughly plan to meet all their needs as they start their journey at Wolfreton.

Primary staff work with us to further support your child's transition by grouping learners into twos and threes as they know who will work well together. All the information collated is used to inform how we create our tutor groups and teaching groups.

They offer a valuable opportunity for learners to meet new friends, begin forming relationships with their tutors and teachers, and grow familiar with the larger school environment. During these days, learners get to know our building, routines, and expectations firsthand. This helps ease anxieties and builds confidence, making the move feel less daunting and more exciting. We look forward to meeting your child during their induction period.

For any learners joining us in-year, we also work with their previous schools planning a careful transition to support their success with us.

Communication

A strong and effective partnership between home and school is highly valued by everyone.

Through our communications we recognise that every family has a range of varied interests and needs. A wealth of information about the life of the school and learners' experiences is shared and regularly updated through our website and fortnightly newsletter – The Wolfreton Way. This enables you to keep up to date with key events, learner achievements and experiences, what your child is learning and how you can help them with this, as well as providing any notices and reminders in a timely way. We recommend that you regularly check our school website www.wolfreton.co.uk to help you stay up to date with what is happening at school.



A wealth of information about the life of the school and learners' experiences is shared and regularly updated through our website and fortnightly newsletter – The Wolfreton Way."



Direct communications home are sent through our text and email system, Arbor. Arbor also contains live attendance and behaviour data. We encourage you to check this daily. You will have already provided us with your email address and mobile number however, if this changes, we ask you to keep us informed to ensure that any future communications we send this way are received. Details of our Data Protection Policy are available on our website.

Alongside written communication, our Parent Services Administrator and dedicated team of Pastoral Managers provide that vital personal contact. Parents can contact our Parent Services Administrator via enquiries@wolfreton.co.uk or switchboard. They will be able to address many queries but will also be able to arrange a time or appointment for you to speak to your child's Pastoral Manager when you need to discuss anything specific.



Curriculum

Our school is committed to providing an ambitious, high quality and inclusive curriculum that is underpinned by our school vision of:

Igniting Fires, Expanding Horizons and Achieving Ambitions

As a school, breadth and balance have always underpinned our approach – we value all subjects. We recognise and allocate sufficient time to allow learners to achieve success in English and maths however, alongside this, all national curriculum subjects benefit from timetabled lessons each week.

Our Key Stage 3 curriculum is designed to teach learners the knowledge and skills that are essential not only to achieve exam results that reflect their true potential, but also for their development as learners. As a school we are fortunate to attract and retain highly skilled teachers who overwhelmingly teach their specialist subject. This enables them to pass on their passion for their subject – something our Sixth Form students often share, inspired their choices as they journeyed through school.

Across Key Stage 3, learners study:

- | | |
|------------------------------------|--|
| · English | · PE |
| · Maths | · Computing |
| · Science | · Design Technology |
| · Languages
(French or Spanish) | · Art |
| · Geography | · Music |
| · History | · Drama |
| · Religious Studies | · Personal Social and
Health Education (PSHE) |

Each half term, we will send parents and carers a Curriculum Overview document. These provide a brief overview of what your child will be learning in each subject that half term. Throughout the year, these can be found on the school website.



Igniting Fires, Expanding Horizons and Achieving Ambitions

Our curriculum is much more than timetabled academic lessons. It includes our ethos, values, behaviours and relationships - what we call The Wolfreton Way. It also includes our carefully planned personal development curriculum and a rich offer of enrichment opportunities that together deliver The Wolfreton Experience. As a whole, our curriculum aims to develop the character virtues our values espouse:

- **Excellence:** We aim to inspire – To be the best we can be
- **Endeavour:** We promote the qualities of determination and courage
- **Respect:** We are firm advocates of friendship and equality

Assessment and Homework

At Wolfreton, we believe that the primary purpose of assessment is to inform staff and learners of the priority for the next phase of teaching and learning.

Using an 'Assessment for Learning' approach, the measurement of learner attainment and progress is not to judge the outcomes of the end of a journey but to inform all involved what knowledge has been retained and understood, what skills have been gained and are embedded, and how further progress can be made in the future.

Work is teacher assessed through 'Key Marked Pieces' of work. Learners complete these at key points within a unit of work. Key Marked Pieces are a mixture of formal tests, extended pieces of work completed over several weeks, and shorter pieces of work completed within a lesson.

Most of these Key Marked Pieces are fixed in exercise books. There are however exceptions if they are completed electronically or are practical tasks. Feedback sheets, typically printed on blue paper, are usually provided. These highlight the grade or level achieved, areas of success which we refer to as WWW (What Went Well) and targets for improvement, referred to as TIFs (To Improve Further). Learners are expected to engage with the feedback provided through their MRI (My Response Is) work.



We set homework that helps learners develop their long-term memory and expand their knowledge further."



Homework

As a school, we know that when used **effectively, homework** and **independent** learning beyond the classroom can impact significantly on progress.

We set homework that helps learners develop their long-term memory and expand their knowledge further.

Homework includes:

- **Retrieval** – Learners are provided with resources that enable them to actively recall information from memory to enhance learning and retention.
- **Reading for purpose** – Learners may be set subject specific reading to develop their knowledge and understanding, using the specialised language for that subject.
- **Reading for pleasure** – Additional reading to support vocabulary development and strengthens access to the curriculum.
- **Revision** – All learners will be taught specific revision techniques, which they can practice independently ahead of a planned Key Marked Piece.
- **Research** – Research work is set to encourage intellectual curiosity.
- **Reflection** – Learners are given the opportunity to consider the process they followed to create a piece of work, what they achieved and what they would do differently next time.
- **Online platforms** – Subject specific work set to retrieve, consolidate or introduce knowledge.

The Wolfreton Way

At Wolfreton we have high expectations of our learners with regards to attendance and behaviour.

We believe firmly that this sets the foundation for high academic success and will ultimately allow our learners

to achieve their ambitions. We teach our learners, 'The Wolfreton Way' through tutor time and 'Head start', our half-termly 'welcome back' tutor session. Through these we ensure a shared understanding of expectations and why we have these. We frequently recognise learners through our House Point system and celebrate their successes through our associated reward events.

Wolfreton learners are proud to be recognised for the following...

Excellence

We aim to **inspire**, to be the best we can be



We aim to be the best we can be, always **focusing on learning** and responding **first time, every time**.

We are always **punctual, equipped** and **prepared to learn**.



We **wear our uniform correctly** and with pride at all times.

Endeavour

We promote the qualities of **determination** and **courage**

We act with courage. We give **100% effort**, **do our best** and **never give up**.

100%



We are determined. We value and **respond positively to feedback** and act **to improve further**



We **take responsibility** for our actions.

Respect

We are firm advocates of **friendship** and **equality**

We are **respectful and safe**. We respect our school environment, equipment and all people.



We **listen, respond politely** and ensure **mobile phones and headphones are never seen**.

We value **friendship, equality and kindness**. We don't tolerate bullying or discrimination.



Rewards and Consequences

Rewards



Rewards 'EXTRAS'

Verbal recognition

Postcards

Certificates

Golden Ticket Events e.g. Colour Run

Rewards Visits

Celebration Assemblies

Consequences



Daily Routines

Access to the school site at the start and end of the day

08:00 - Learner gates at Carr Lane and Well Lane open for pedestrians and cyclists. Main reception opens at the Well Lane entrance.

08:30 - Roll call - we expect all learners to arrive on time or prior to this so that they are in their roll call line on time.

08:30 - Gates are locked to secure the site, access after this time is from the Well Lane entrance only.

15:20 - Carr Lane gates are locked, after this time learners must leave via the entrance on Well Lane.

Learners who arrive after the gates close need to report to main reception. Persistent lateness will be addressed by the learners' Tutor and Pastoral Manager.

At lunchtime: All learners remain on the school premises at lunchtime.

A wide range of food is available from Caterlink, our catering supplier, or learners may bring a packed lunch.

Signing out: Appointments should be made outside school hours wherever possible. If a learner must leave school during the day for any reason, then a note from parents in advance of the date is required in the student planner. Learners must sign out at reception. If they return to school later the same day, then they must sign in again.

Roll Call	08:30
Tutor	08:35 - 08:55
Lesson 1	08:55 - 09:55
Lesson 2	09:55 - 10:55
Break	10:55 - 11:15
Lesson 3	11:15 - 12:15
Lunch	12:15 - 13:00
Lesson 4	13:00 - 14:00
Lesson 5	14:00 - 15:00

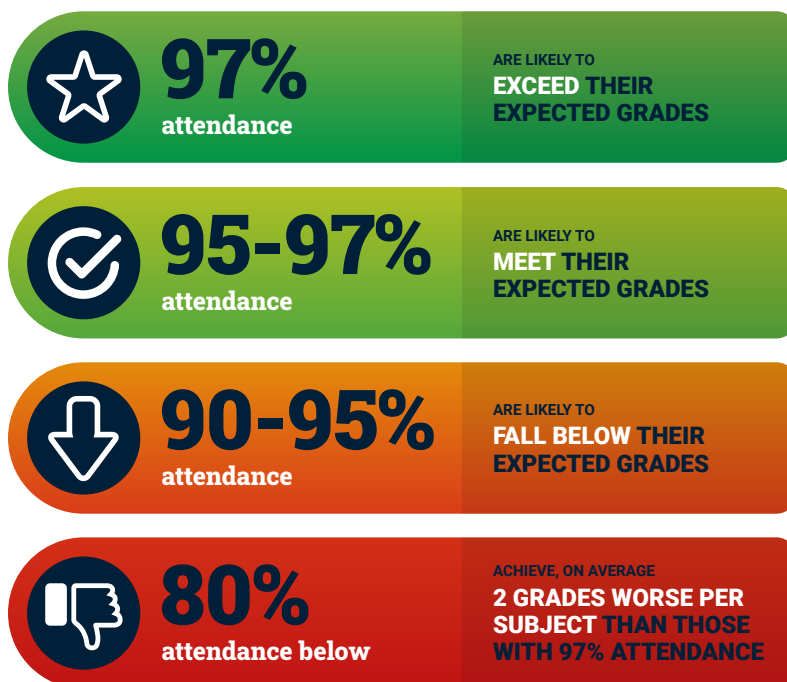
Equipment

It is very important that your child is organised and attends each day equipped to learn.

At Wolfreton learners are expected to bring the following equipment:

Essential: school bag / backpack (large enough to fit exercise books in), student planner (provided by school; there is a charge to replace), pencil case (a clear pencil case is needed in external exams), 2 writing pens (blue or black), 1 red pen, 2 pencils, pencil sharpener, ruler (30 cm recommended), rubber, exercise books for that day's lessons, reading book, hair bobble (to tie back hair for PE / science / practical lessons) and water bottle.

Other valuable: colouring pencils, highlighters, protractor (360 degree), scientific calculator (we recommend the cassio model) and a glue stick.



Attendance

If your child is ill, please let us know by contacting attendance via email, or our dedicated 24-hour number:

Call: **(01482) 670675**

Email: **attendance@wolfreton.co.uk**

When you leave a message, please remember to give:

- Your child's full name
- Your child's tutor group
- Your full name
- Reason for absence
- Expected date of return (if known)

The link between school attendance and achievement is well documented. The most recent research suggests that 17 missed school days in a year equates to a drop of one GCSE grade in results. Less than 95% attendance will result in your child failing to achieve their full potential. If you have any concerns regarding attendance, please contact Mrs Anderson, our Attendance and Welfare Manager.

If a learner has an accident or feels unwell, they need to inform their teacher. They will be sent to First Aid to be looked after. If a learner is deemed too ill to remain at school or if hospital treatment is necessary, then parents will be contacted by the school to make suitable arrangements. Learners must not telephone home or make this contact themselves.

You can help by:

- Encouraging your child to aim for 100% attendance
- Making sure that your child attends school unless they are too ill to leave the house. If in doubt, send them to school and we will send them home later if they are unable to cope
- Arranging holidays and medical appointments outside of school time
- Keeping in close contact with the school if there are issues at home which may affect your child's attendance
- Supporting us by making clear that truancy is as unacceptable to you as it is to us (in the unlikely event that your child truant from school)



Pastoral Care

One of our recognised strengths is our pastoral care.

All learners benefit from the support of a Head of Year and Pastoral Manager. They are always willing to help with any problems your child may have. They work hard to ensure that each individual is known and matters. They ensure that each learner can feel part of a smaller family through their tutor groups and year groups. Tutor groups are guided through their school year by their Form Tutor.

Each learner is also allocated a House. Our Houses are now well established and enjoy the benefits that this tradition brings. The House names - **Nightingale**, **Owen**, **Rowntree**, **Tomlinson** and **Wilberforce** - were selected by learners.



The namesakes of each House were selected because they reflected 'The Wolfreton Way' of **Excellence, Endeavour, Respect**. They were also philanthropists, as they were charitable and caring towards others. Learners take part in competitions and charitable events as part of their House.



Student Leadership

Learners are given a range of opportunities to make a meaningful contribution to school life.

Each tutor group across Years 7 to 11 elects two learner representatives to sit on their year council. Two learners from this group are then elected to represent their year on the Year Council joining our Head Learners and Sixth Form representatives.

In recent years, the Student Council have helped shape the school catering provision, designed equality and diversity initiatives and also determined the school reward events. Most recently they were behind our new water bottle filling stations and the outdoor games equipment for lunchtime. The group also plays a key role in the recruitment of new colleagues!



...the Student Council have helped shape the school catering provision, designed equality and diversity initiatives and also determined the school reward events."



Our Uniform



The wearing of uniform gives every learner a sense of identity, equality and discipline as a member of the school community.

The uniform encourages learners to feel a sense of pride and a sense of belonging to the school.

In addition, the uniform sets clear expectations, ensures health and safety and provides a conducive learning environment for all learners in preparation for their future working life.

If at any time there are any queries regarding permitted styles, parents/carers should contact the school, particularly prior to purchasing garments via email: enquiries@wolfreton.co.uk.

If any parents/carers are experiencing difficulties regarding the uniform, please contact the school without delay.

- **House Tie:** Worn with top button of shirt fastened and 7-8 full stripes to be always showing. Please confirm the House colour before purchase.
- **Blazer:** Black blazer with school logo. The blazer must be worn to school every day.
- **Shirt/Blouse:** Plain white, long or short sleeved, formal uniform type of standard length to tuck in and with standard shirt type collar.
- **V-necked Jumper:** Plain black v-neck, with or without the Wolfreton logo. (Optional)
- **Black Box Pleated Skirt:** Skirts must sit no more than just above the knee (worn with black tights at least 60 denier or black socks).
- **Trousers:** Smart, tailored, plain black, formal uniform type. No Lycra, jean, cotton, or cord type material (worn with black socks). Plain black belt with small plain buckle is allowed.
- **Footwear:** Plain black, black laces, polishable leather or leather-look shoes or ankle boots with flat or low heels. Shoes with logos in contrasting colours are not permitted. No other type of shoe (e.g., fabric, sandals) is allowed.

Our PE Kit



Mandatory Items

- Polo Shirt: Navy and gold with Wolfreton logo.
- Shorts or Skort: Plain navy.
- Sports Socks: Navy sports socks.
- Footwear: Trainers and football boots.

Optional Items

- Tracksuit bottoms or sport leggings: Navy.
- Base layer: Navy base layer top and bottoms.
- Hooded top: Navy with Wolfreton logo.



The uniform encourages learners to feel a sense of pride and a sense of belonging to the school."



Our uniform supplier is Steady Schoolwear.
www.steadyschoolwear.co.uk

Uniform items can be purchased from Steady Schoolwear, either online or in store.

17 Savile Street, Hull HU1 3EF.

Tel: 01482 322982

Email: sales@steadyschoolwear.co.uk

The latest copy of the uniform policy is on the school website.

Please check this for any updates.



Enrichment Clubs, Trips and Visits

Our staff volunteer their time to offer a wide range of extracurricular and enrichment activities, trips and visits.

Extracurricular Clubs: over the last year, clubs related to the arts have included dance club, drama club, music groups, singing group and of course the school production of Aladdin – Grease rehearsals are underway for Autumn 2025. A wide range of other interests are catered for in clubs including the Active Travel Ambassadors (ATA) group, board games club, coding club, dungeons and dragons club and science club to name a few.

We are of course, also a school with a long, proud and strong sporting history and there are many opportunities

to get involved here. Just a few of the sports clubs on offer to our keen sportspeople include athletics, badminton, basketball, fitness, football and rugby (both boys and girls), netball, and table tennis.

School trips and visits: we also believe in the value of trips and visits, and we plan these in line with our vision of Igniting Fires and Expanding Horizons. Over the last year, all Key Stage 3 learners have had the opportunity to take part in one of our 'entitlement' school trips if they choose. Year 7 have been able to visit either Tropical World and Roundhay Park or Lincoln Castle or Cathedral, as well as the Yorkshire Wildlife Park. Other trips, in a range of year groups have included a visit to the theatre, to Leicester Space Centre, Nottingham's Holocaust Museum, London and the Olympic Park, and the ski trip to Italy.

Personal Development

The Wolfreton Experience is our Personal Development Curriculum.

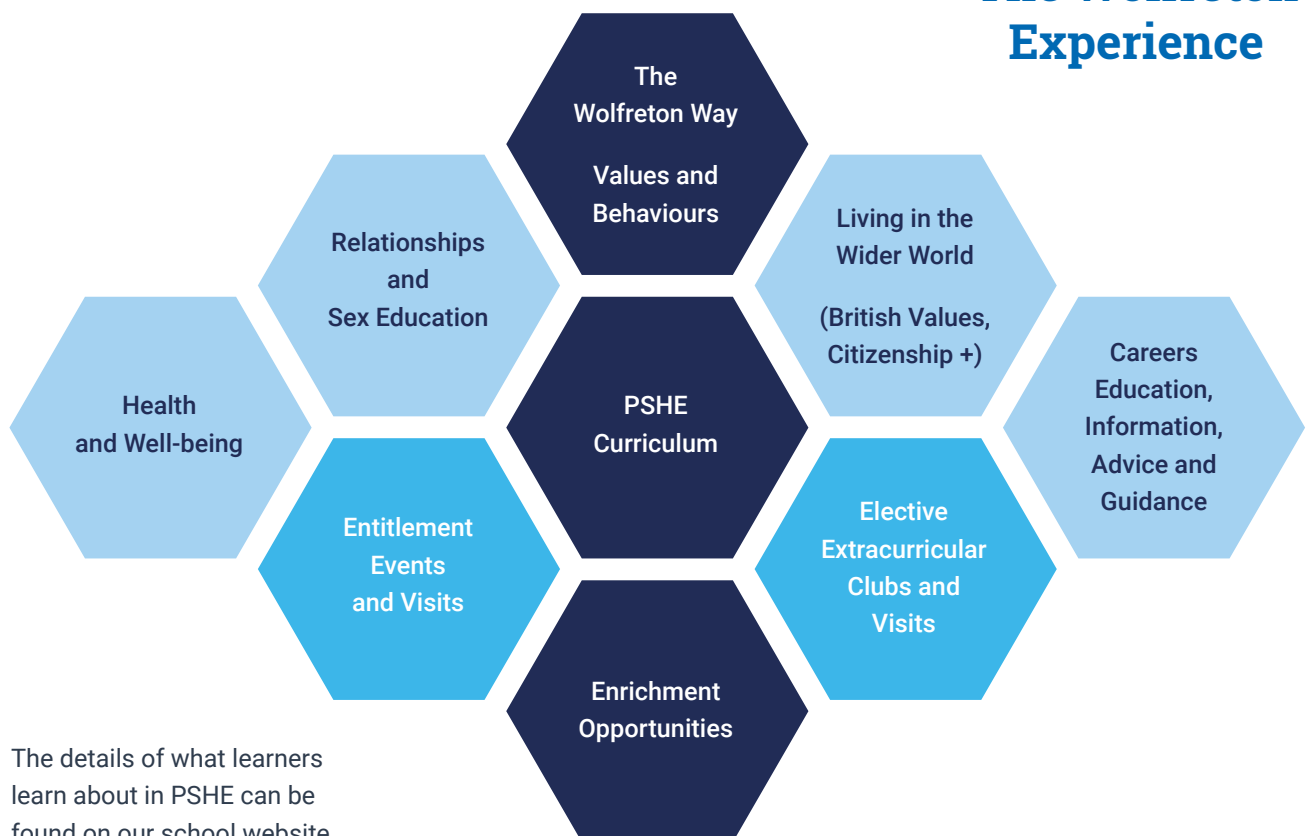
This curriculum extends beyond the subject we teach, combining carefully selected and sequenced taught elements with a broad range of entitlement and elective enrichment opportunities. There are three parts to The Wolfreton Experience:

The Wolfreton Way – where learners learn about our values, behaviours and the characteristics that enable them to be successful

PSHE – a curriculum designed around the four strands of health and wellbeing, relationships and sex education, living in the wider world, and careers

Enrichment opportunities – Entitlement events and visits are open to everyone, for example the Prison Me No Way in Year 9, or Year 7 Yorkshire Wildlife Park Visit, as well as many other elective extra-curricular opportunities.

The Wolfreton Experience



The details of what learners learn about in PSHE can be found on our school website.



This curriculum extends beyond the subject we teach, combining carefully selected and sequenced taught elements with a broad range of entitlement and elective enrichment opportunities.”





Arbor Pay Parent Portal



Arbor is easy-to-use, and you have the freedom to make payments whenever you want, 24 hours a day 7 days a week."



We are a cashless school.

This means we are not able to accept cash payments for items such as trips, revision books, school meals etc. Instead, parents and carers are able to make payments via Arbor Pay, via a secure website or the app.

The main benefits of this system are:

- Arbor is easy-to-use, and you have the freedom to make payments whenever you want, 24 hours a day 7 days a week
- Your child no longer has to take responsibility for bringing money into school because payments made using Arbor will reach us quickly, safely and securely
- The balance and transactions from your child's cashless catering account are uploaded onto Arbor at

the end of each day so that you know how much is left in the account and what has been bought

Arbor is a free app for Apple and Android smartphones which will let you:

- See all messages and alerts from the school like school closures and attendance queries
- Send messages to the school for free like replying to attendance queries
- Make payments

It allows the school to:

- Have more efficient and effective direct communication, especially when making payment requests for trips
- Send and receive messages through the app

Catering

We have a variety of dining spaces at Wolfreton providing seating and menus to suit everyone.

The Forum servery, Grab and Go, and the Kiosk offer a range of food from traditional Sunday lunch style meals to sandwiches, with a range of global cuisines and snacks in between. The Sixth Form have their own cafe and refectory.

From September 2025, our school catering provider will be Caterlink. They provide nutritionally balanced meals at lunchtime, with breakfast and break snacks available too.

As a cashless school, we operate a biometric system. Consent is provided via Arbor with learners being set up during the transition process.

Free School Meals:

We encourage parents and carers to apply for free school meals as we know that this saves parents money and encourages learners to eat healthy food.

Some parents may be reluctant to apply because they are concerned about any stigma attached to learners receiving free meals. However, because this system is automatic, learners are not personally identified as receiving a free school meal and as such anonymity is ensured.

For more information, visit the Parent page on our school website.



Positive Destinations

The Consortium Sixth Form College delivers post-16 provision to students at campuses at Hessele and Wolfreton with a focus on providing high quality teaching and individual support to secure the best achievement and outcomes for all.

Our Sixth Form vision is **Igniting Futures, Together** and our shared values of **Ambition, Collaboration** and **Excellence** form the basis of everything we do.

Our Wolfreton Campus, the Sixth Form is based on the top floor in our fantastic building and Sixth Form students have their own facilities. This includes specialised teaching seminar rooms, independent learning facilities and a refectory.

Our teachers are experts in their fields and many of our staff are examiners for exam boards and verifiers for vocational qualifications. This level of experience across all departments ensures that students receive the highest quality teaching from staff who have in depth knowledge of, and passion for, their subject.

Some success stories this year include Ellie who is studying Environment and Business at the University of Leeds, Kian who is studying Fine Art at Leeds Art University and Beth who is on a Criminology course at Loughborough University.

Discover more at
www.consortiumcollege.co.uk
[@Consortium6Form](https://twitter.com/Consortium6Form)



Beth

Loughborough University



THE CONSORTIUM
SIXTH FORM COLLEGE



Kian

Leeds Art University



Term Dates 2025-26

Autumn Term

School re-opens for learners:
Wednesday 3 September 2025

School closes:
Thursday 23 October 2025

School re-opens for learners:
Monday 3 November 2025

School closes:
Friday 19 December 2025

Spring Term

School re-opens for learners:
Tuesday 6 January 2026

School closes:
Friday 13 February 2026

School re-opens for learners:
Monday 23 February 2026

School closes:
Friday 27 March 2026

School re-opens for learners:
Monday 13 April 2026

Summer Term

May Day Bank Holiday:
Monday 4 May 2026

School closes:
Friday 22 May 2026

School re-opens for learners:
Monday 1 June 2026

School closes:
Friday 17 July 2026



Wolfreton
SCHOOL AND SIXTH FORM COLLEGE



Wolfreton School and Sixth Form College
Well Lane, Willerby, East Yorkshire, HU10 6HB
Tel: 01482 659356, enquiries@wolfreton.co.uk

All information is correct at time of printing and is subject to change without notice.